

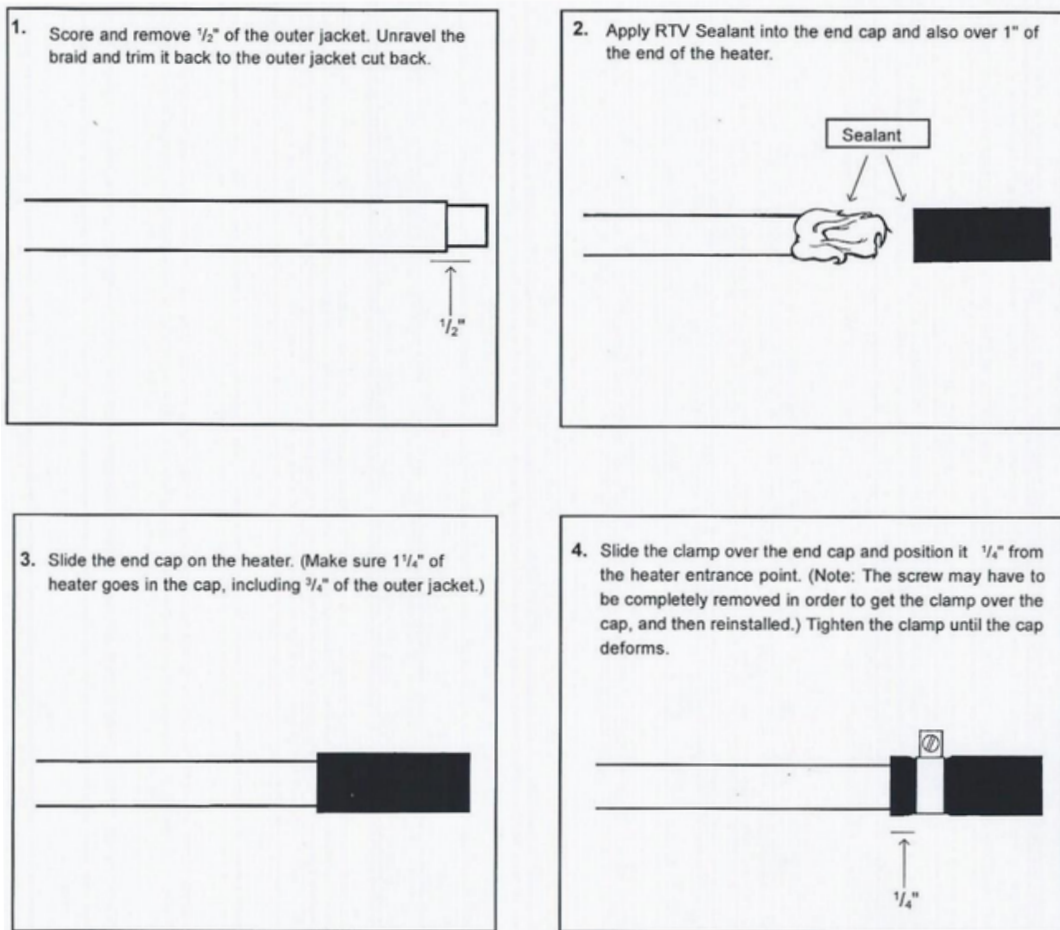
INSTALLATION INSTRUCTIONS

- For use with LXR and MXR Families of Heating Cables in Ordinary and Division 2 locations.

PARTS LIST

Description	Quantity
End Cap	1
Sealant	1
Clamp	1

INSTALL FOR HEATER'S WITH BRAID AND OVER JACKET

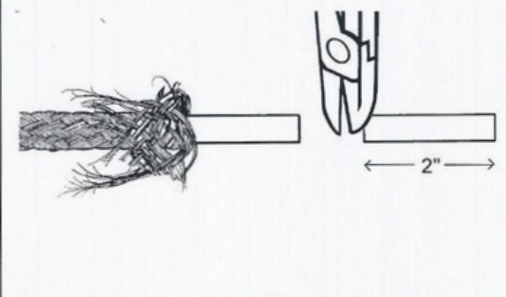


PARTS LIST

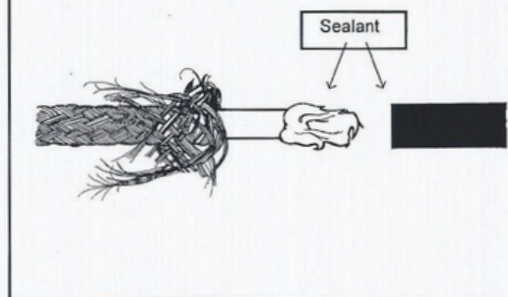
Description	Quantity
End Cap	1
Sealant	1
Clamp	1
Crimp Sleeve	1

INSTALL FOR HEATER'S WITH BRAID ONLY (NO OVER JACKET)

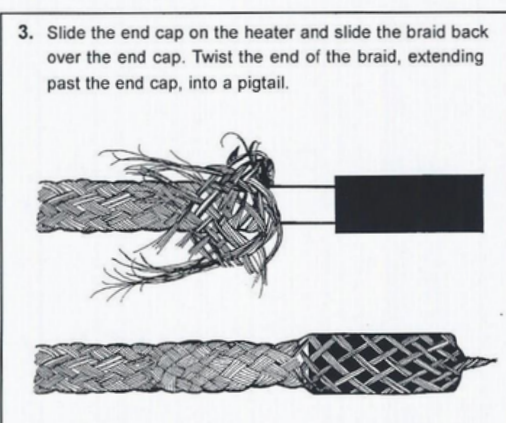
1. Slide the braid back from the end of the heater and cut 2" of heater off the end of the heater.



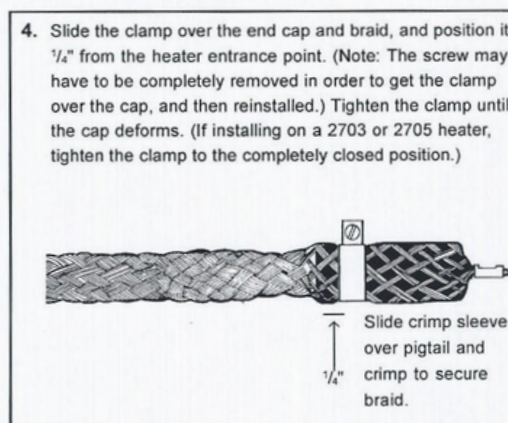
2. Apply RTV Sealant into the end cap and also over 1" of the end of the heater.



3. Slide the end cap on the heater and slide the braid back over the end cap. Twist the end of the braid, extending past the end cap, into a pigtail.



4. Slide the clamp over the end cap and braid, and position it 1/4" from the heater entrance point. (Note: The screw may have to be completely removed in order to get the clamp over the cap, and then reinstalled.) Tighten the clamp until the cap deforms. (If installing on a 2703 or 2705 heater, tighten the clamp to the completely closed position.)



Slide crimp sleeve over pigtail and crimp to secure braid.